

# 22 WinTMC Fat Client

---

## 22.1 WinTMC Overview

WinTMC is a ThinManager Client for PCs running Windows NT/2000/XP/Vista/Windows 7 operating systems. WinTMC provides similar functionality to that of a Terminal. The WinTMC client can use failover, Instant Failover, SmartSession, MultiSession, and AppLink, among others. Once the WinTMC client is installed the client can be managed remotely through ThinManager instead of locally.

---

Note: WinTMC should not be installed on a computer that is running ThinManager. A port conflict will prevent either from running properly. WinTMC is meant for PCs and not servers.

---

WinTMC must use Display clients.

WinTMC supports MultiMonitor if the PC has Windows running on multiple video cards.

WinTMC does not support Tiling.

See WinTMC Installation for details on installation.

---

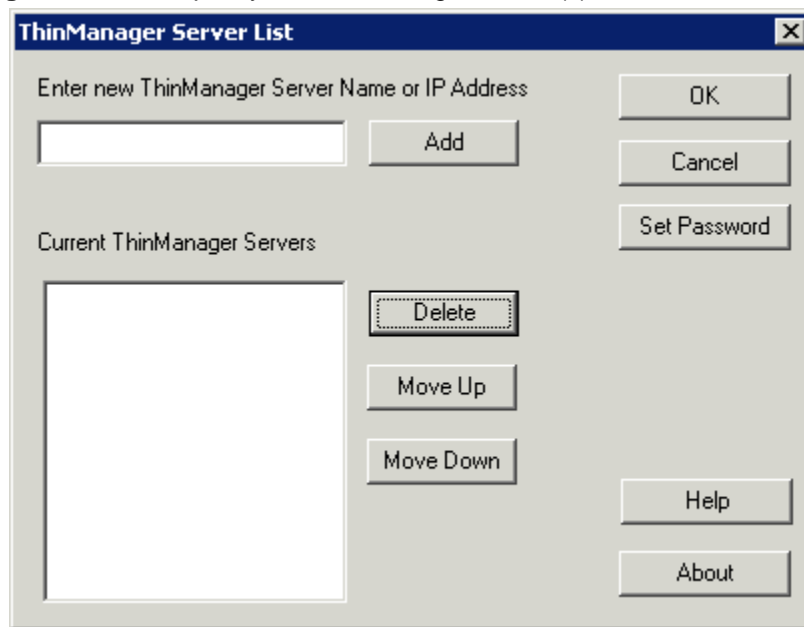
## 22.2 Local WinTMC Configuration

When WinTMC starts, a **Configure** button will be displayed on the splash screen.



*WinTMC Splash Screen*

Click on the **Configure** button to specify the ThinManager Server(s) to use.



*WinTMC ThinManager Server List Configuration*

The ThinManager Server List allows the WinTMC to be pointed to one or more ThinManager Servers to retrieve its configuration.

Enter the IP address or name of your ThinManager Servers in the **Enter new ThinManager Server Name or IP Address** field and click the **Add** button to add them to the Current ThinManager Servers list.

The WinTMC will try to connect to the ThinManager Servers in the order listed, so the order can be changed with the **Move Up** and **Move Down** buttons.

Unneeded ThinManager Servers can be removed with the **Delete** button.

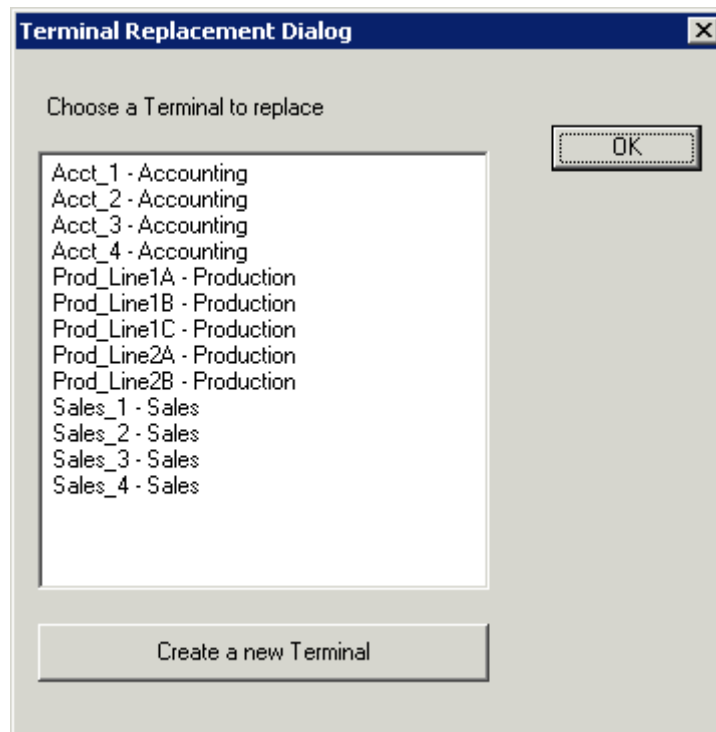
This configuration menu can be password protected by selecting the **Set Password** button. Once the password is set, when WinTMC is started and the Configure button is clicked, a password will be required to change the configuration.



*No ThinManager Server Specified*

If the **OK** button is selected without entering a ThinManager Server, an error window will remind you to enter a ThinManager Server address.

Once the local configuration is set, WinTMC will connect to a ThinManager Server and attempt to retrieve its configuration.



*Terminal Replacement Dialog*

If the WinTMC PC has not been defined, the user will be prompted with a dialog box to allow for the creating a new configuration or replacing an existing terminal configuration on the ThinManager Server.

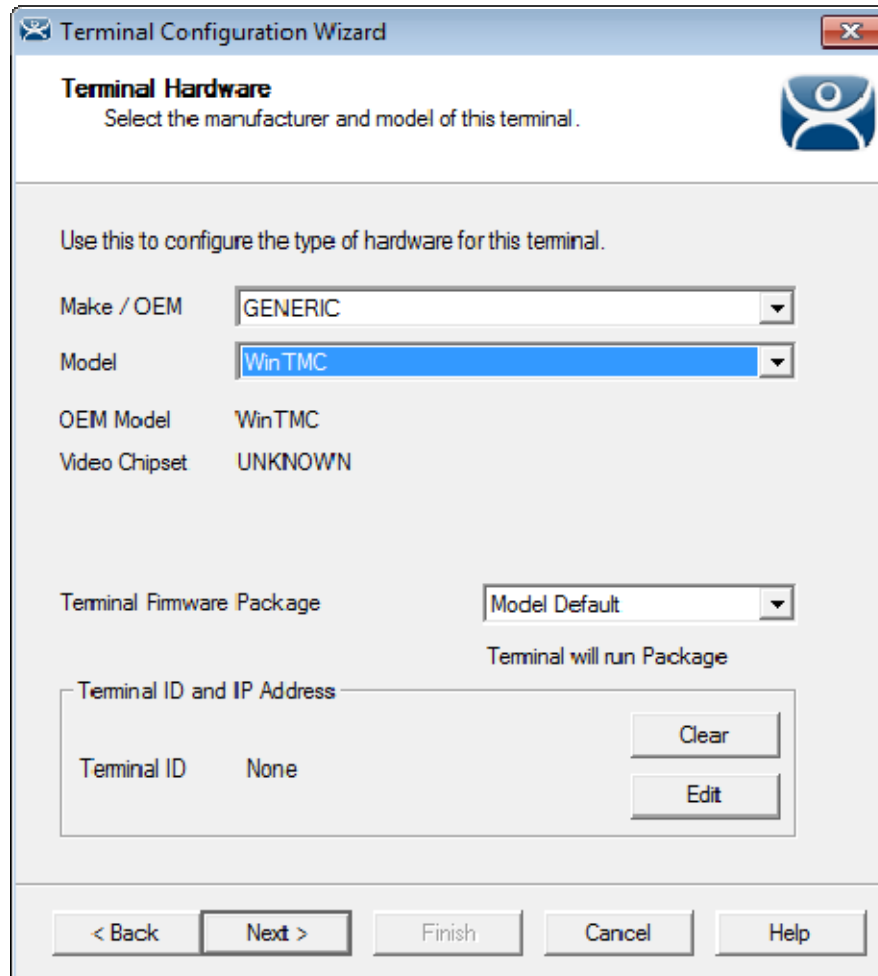
This functionality is similar to that of the create/replacement menu on a Thin Client. See Replace or Create New Mode for details on that method.

Once the WinTMC has been assigned a configuration you will not need to make a selection again.

If you want to run WinTMC without the configure button, you can run it from a command line with the ThinManager Servers separated by semi-colons (i.e. **WinTMC TMS1; TMS2; TMS3**). This will eliminate the configure button when WinTMC is started.

## 22.3 WinTMC Configuration in ThinManager

If you want to pre-create a WinTMC client in ThinManager using the Terminal Configuration Wizard, select **GENERIC** for the **Make/OEM** and **PersonalComputer** for the **Model** on the **Terminal Hardware** page of the Terminal Configuration Wizard.



The screenshot shows the 'Terminal Configuration Wizard' dialog box, specifically the 'Terminal Hardware' page. The title bar reads 'Terminal Configuration Wizard'. Below the title bar, the page is titled 'Terminal Hardware' with the instruction 'Select the manufacturer and model of this terminal.' and a small icon of a person. The main area contains the following fields and controls:

- 'Use this to configure the type of hardware for this terminal.'
- 'Make / OEM': A dropdown menu with 'GENERIC' selected.
- 'Model': A dropdown menu with 'WinTMC' selected.
- 'OEM Model': A text field containing 'WinTMC'.
- 'Video Chipset': A text field containing 'UNKNOWN'.
- 'Terminal Firmware Package': A dropdown menu with 'Model Default' selected.
- 'Terminal will run Package': A text field.
- 'Terminal ID and IP Address': A section containing a text field for 'Terminal ID' with the value 'None', and two buttons: 'Clear' and 'Edit'.

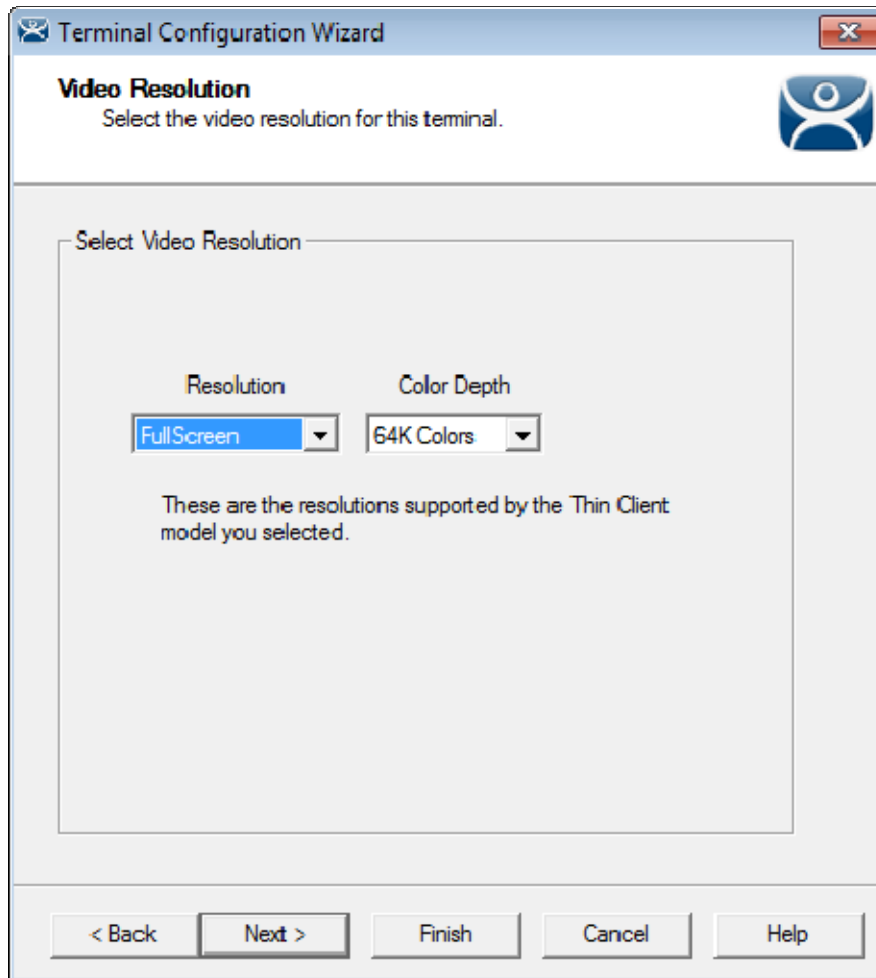
At the bottom of the dialog, there are five buttons: '< Back', 'Next >', 'Finish', 'Cancel', and 'Help'.

*WinTMC Settings in Terminal Hardware*

The Terminal ID will fill in with the name of the PC.

The Terminal Configuration Wizard for a WinTMC client is the same as for a thin client with a few exceptions. These include:

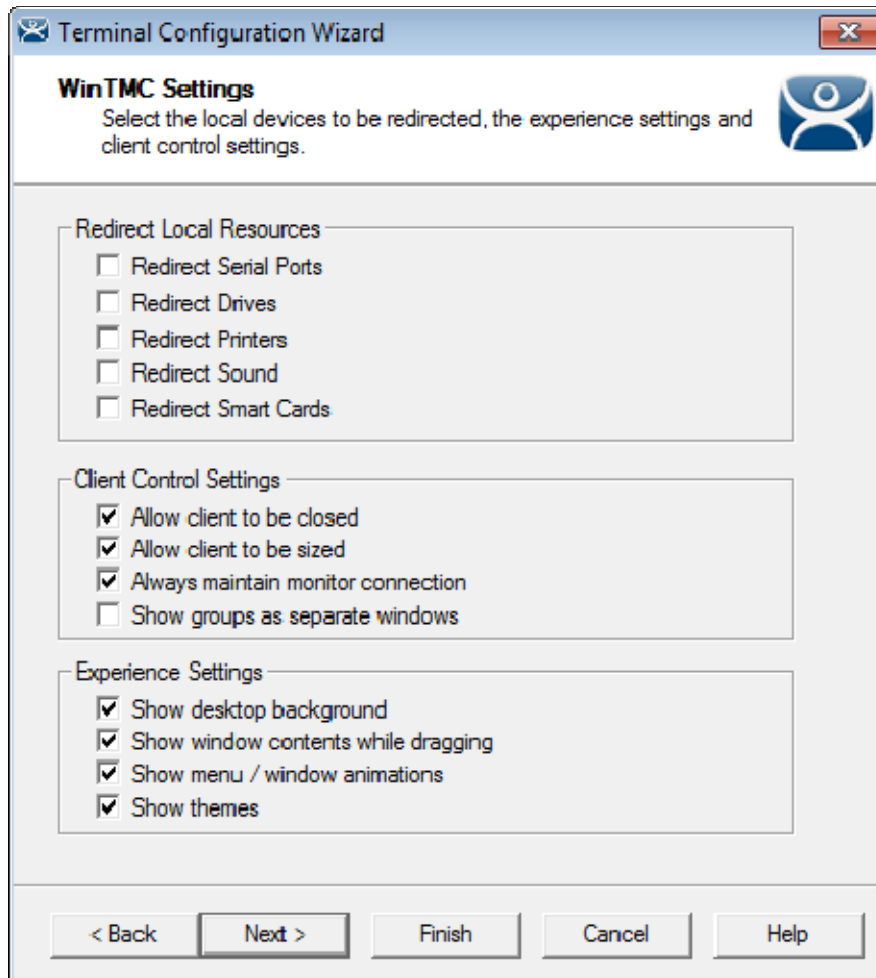
### 22.3.1.1 WinTMC Video Mode Page



*Video Resolution for WinTMC*

The Video Mode for WinTMC includes a setting for **FullScreen**.

### 22.3.1.2 WinTMC Settings Page



*WinTMC Settings*

The **Terminal Configuration Wizard** includes a **WinTMC Settings** page.

WinTMC clients can also be configured on the WinTMC Settings page. These only apply to connections made by the WinTMC fat client.

The settings include:

#### **Redirect Local Resources:**

- **Redirect Serial Ports** - This checkbox, if selected, will make local serial ports available in a session. Serial Port redirection does not work when you connect to a terminal server running Windows 2000 or earlier.
- **Redirect Drives** - This checkbox, if selected, will make local drives available in a session. Drive redirection does not work when you connect to a terminal server running Windows 2000 or earlier.
- **Redirect Printers** - This checkbox, if selected, will make your local printer available in a session.
- **Redirect Sound** - This checkbox, if selected, will allow audio played in your session to play locally. Sound redirection does not work when you connect to a terminal server running Windows 2000 or earlier.

- **Redirect Smart Cards** - This checkbox, if selected, will make your smart card available in a session. Smart card redirection does not work when you connect to a terminal server running Windows 2000 or earlier.

#### Client Control Settings:

- **Allow Client to be closed** - This checkbox, if selected, will enable your user to close the client (WinTMC program).
- **Allow client to be sized** - This checkbox, if selected, will enable your user to resize the client.
- **Always maintain monitor connection** – Enable this setting to keep the monitoring connection active when WinTMC is closed to allow shadowing. Unselecting this checkbox will release the WinTMC license when the WinTMC program is closed but will deny shadow access.
- **Show groups in separate windows** – This checkbox, if selected, will display multiple Display Clients as separate windows rather than in one window shell.

#### Experience Settings:

- **Show Desktop Background** - This checkbox, if selected, will enable your user to select a Windows Desktop Background. If not selected, the background will be a solid color.
- **Show window contents while dragging** - This checkbox, if selected, will show the window contents to be shown while the window is being dragged.
- **Show menu/window animations** - This checkbox, if selected, will enable menu/window animations on the client.
- **Show Themes** - This checkbox, if selected, will enable your user to select a Windows Theme.

---

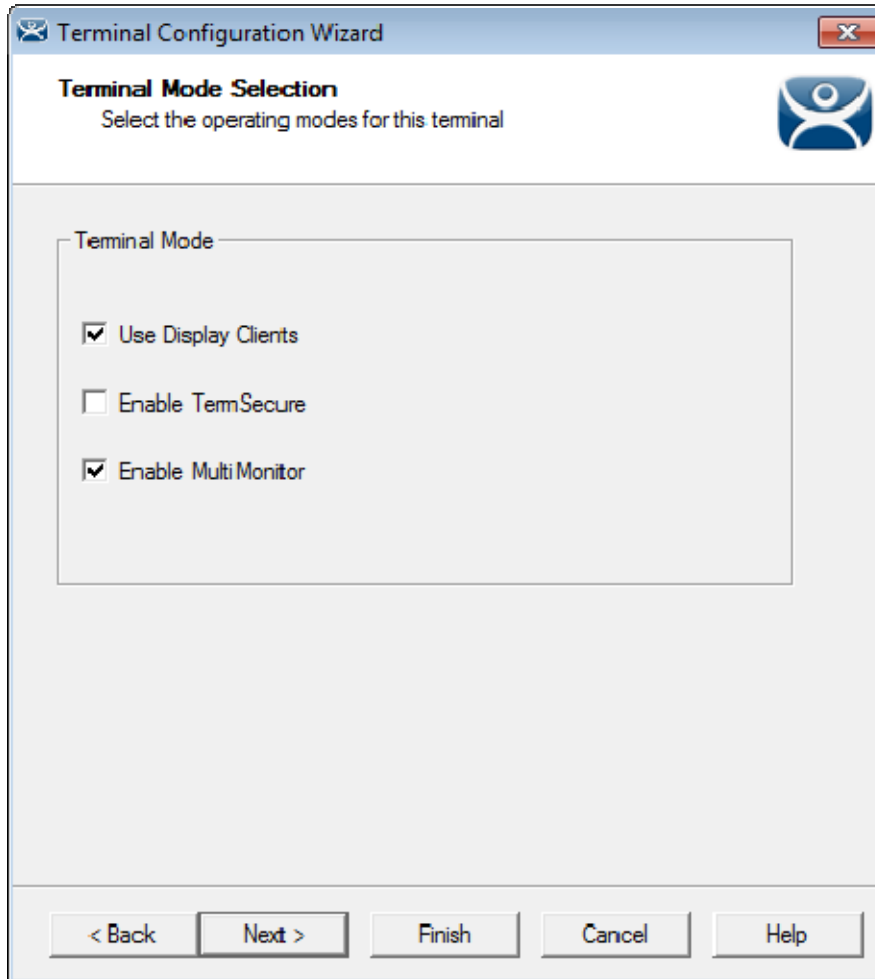
**Note:** These functions may be denied by user policies or terminal server configuration. Check the Microsoft Local Policy, Group Policy, and Terminal Services Configuration. See Non-ThinManager Components for details.

---

## 22.3.2 MultiMonitor WinTMC

ThinManager now supports MultiMonitor for WinTMC if the PC has Windows running on multiple video cards.

Selecting the **Enable MultiMonitor** checkbox will allow you to configure a WinTMC client for MultiMonitor use.



*MultiMonitor – Enable MultiMonitor*

MultiMonitor requires the use of Display Clients. Once the **Use Display Clients** checkbox is selected on the **Terminal Mode Selection** page the **Enable MultiMonitor** checkbox becomes visible.

Select the **Use Display Clients** and the **Enable MultiMonitor** checkboxes, and then select the **Next** button.

The Terminal Configuration Wizard will display the **MultiMonitor Video Settings** page, **Monitor Layout** page, and **Display Client Selection** page like it does for thin clients. See MultiMonitor for details.

### 22.3.3 WinTMC Modules

WinTMC clients cannot use the ThinManager modules because they are running Windows locally. One must install touch drivers, sound drivers, printers, and etc. through the local Windows operating system instead of relying on ThinManager modules.

### 22.3.4 WinTMC Licensing

A PC running as a WinTMC terminal requires a WinTMC license in addition to the Terminal Connection license.

WinTMC licenses are sold without redundancy and inherit the redundancy of the Terminal Connection licenses in the Master License. See Licensing ThinManager for details.